

Shenyang Shenyileng Refrigeration Co., Ltd.

Add: No. 31 Zhenxing 6 St., Hutai Xincheng Shenyang City, Liaoning Province, China

Tel: +86-24-83501123

Fax: +86-24-87440208

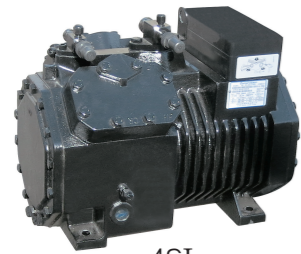
Web: <http://www.syl-inter.com>

E-mail: colin_inter@vip.sina.com; colin@syl-inter.com

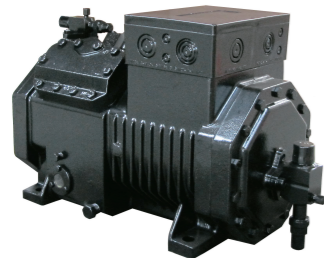
For further information, please login our home page: <http://www.syl-inter.com>

Semi-Hermetic Reciprocating Compressor Catalogue (SI/TI Series)

Compressor



4SI



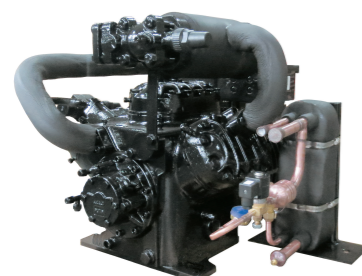
4SI



4SI



6SI



6TI

Series 4SI compressors include high temperature and low temperature types, they are widely used in high/medium/low temperature working conditions. Low temperature power range: 3Hp~20Hp, evaporating temperature range: $-5^{\circ}\text{C} \sim -45^{\circ}\text{C}$; High temperature range: 5Hp~30Hp, evaporating temperature range: $12.5^{\circ}\text{C} \sim -30^{\circ}\text{C}$. Applicable refrigerant: R22/R404A/R407C/R134a.

Series 6SI compressors include high temperature and low temperature types, they are widely used in high/medium/low temperature conditions. Low temperature power range: 25Hp~40Hp, evaporating temperature range: $-5^{\circ}\text{C} \sim -45^{\circ}\text{C}$; High temperature range: 30Hp~50Hp, evaporating temperature range: $12.5^{\circ}\text{C} \sim -30^{\circ}\text{C}$. Applicable refrigerant: R22/R404A/R407C/R134a.

6TI series compressors (2-stage) are suitable to be used in low temperature condition, power range: 20Hp~30Hp, evaporating temperature range: $-20^{\circ}\text{C} \sim -50^{\circ}\text{C}$ (R22).



Performance Testing Centre



Machining Centre



Coordinate Detector

SI Series	2-28
Capacity	2-15
R22	2-5
R404A	6-9
R407C	10-11
R134a	12-15
Compressor Model Description	16-16
Technical Parameters	17-20
Dimensions	21-25
Electrical Diagrams	26-28
2-Stage 6TI Series	29-34
Capacity	29-29
R22	29-29
R404A	29-29
Compressor Model Description	30-30
Dimensions	31-31
Technical Parameters	32-32
Electrical Diagrams	33-34

Model	Condensing Temperature		Evaporating Temperature							
			-5	-10	-15	-20	-25	-30	-35	-40
4SILV-030	30	Q	12890	10280	8230	7000	5480	4220	3160	2280
		P	3250	3070	2860	2680	2430	2170	1930	1710
	40	Q	11110	8940	7070	5950	4600	3470	2530	1770
		P	3780	3480	3160	2960	2620	2280	1970	1700
	50	Q	9550	7590	5890	4910	3810	2740	1920 ^①	
		P	4220	3820	3420	3250	2880	2520	2130	
4SILV-050	30	Q	18950	15760	12410	10200	8030	6200	4640	3350
		P	4770	4510	4210	3930	3620	3270	2910	2550
	40	Q	16660	13450	10690	8740	6810	5170	3780	2620
		P	5560	5140	4700	4350	3920	3490	3050	2620
	50	Q	14340	11430	8930	7210	5630	4080	2890 ^①	
		P	6230	5660	5090	4670	4230	3820	3390	
4SILV-060I	30	Q	23660	19420	15800	12690	10030	7900	5800	4100
		P	5670	5450	5130	4750	4310	3700	3200	2600
	40	Q	20890	17060	13790	10980	8580	6600	4800	3200
		P	6710	6300	5820	5280	4700	4000	3400	2600
	50	Q	18260	14880	11960	9450	7320	5200	3600 ^①	
		P	7720	7140	6500	5820	5120	4100	3300	
4SILV-060	30	Q	25400	20390	16540	13220	10380	7930	5880	4170
		P	5960	5630	5240	4790	4290	3780	3230	2670
	40	Q	21980	17960	14470	11480	8920	6660	4800	3250
		P	6890	6380	5830	5240	4630	4060	3400	2690
	50	Q	19020	15450	12370	9560	7390	5290	3630	
		P	7740	7060	6340	5630	4900	4130	3330	
4SILV-080	30	Q	30490	24950	20100	15980	12430	9730	7250	5170
		P	7270	6900	6420	5860	5250	4660	4010	3350
	40	Q	27130	22080	17650	13860	10610	8120	5860	3970
		P	8500	7880	7190	6430	5630	5060	4320	3510
	50	Q	23860	19180	15180	11740	8960	6640	4610	
		P	9600	8750	7830	6880	6090	5250	4370	
4SILV-100	30	Q	35290	28960	23460	18750	14710	11220	8310	5860
		P	8440	8030	7490	6860	6140	5460	4700	3960
	40	Q	31140	25960	20490	16230	12580	9410	6780	4580
		P	9740	9030	8250	7420	6560	5680	4830	4020
	50	Q	27030	21930	17520	13660	10400	7780	5280	
		P	10920	9940	8930	7950	6910	5890	4930	

* Refrigerating capacity relating to suction temperature 20°C , liquid without subcooling.

* Additional cooling or limiting the suction temperature.

* Additional cooling + Changing the position of the suction valve.

* Additional cooling + Liquid spray device.

* ① Additional cooling + changing the position of the suction valve + The max. inhalation superheat is 20K.

Model	Condensing Temperature		Evaporating Temperature							
			-5	-10	-15	-20	-25	-30	-35	-40
4SILV-120	30	Q	40740	34090	27130	21680	17040	12860	9500	6690
		P	10010	9460	8790	8020	7160	6290	5410	4550
	40	Q	36280	29650	23910	18980	14760	10930	7880	5350
		P	11460	10600	9660	8660	7640	6660	5670	4750
	50	Q	31730	25790	20640	15990	12400	8890	6140	
		P	12770	11630	10430	9270	8090	6940	5840	
4SILV-150	30	Q	51780	42270	34110	27080	21090	16240	11880	8230
		P	12730	11930	11010	9980	8820	8250	7130	5980
	40	Q	47320	37720	30200	23810	18320	13700	9700	6380
		P	14910	13810	12560	11190	9760	8760	7300	5900
	50	Q	41280	33360	26530	20690	15640	11390	7840	
		P	17110	15670	14130	12470	10850	9210	7530	
4SILV-200	30	Q	59400	48460	39110	31090	24260	18750	13780	9570
		P	14640	13670	12630	11510	10290	9650	8400	7100
	40	Q	54240	43260	34750	27470	21290	15920	11320	7450
		P	17390	16040	14600	13070	11420	10350	8750	7140
	50	Q	47320	38360	30640	23960	18170	13260	9140	
		P	20100	18400	16650	14890	13140	11230	9190	
6SILW-250	30	Q	77720	63460	51180	40640	31630	24350	17830	12340
		P	19100	17890	16510	14960	13230	12340	10700	8990
	40	Q	71000	56630	45390	35740	27470	20540	14560	9560
		P	22400	20700	18840	16790	14630	13010	10960	8860
	50	Q	61970	50090	39850	31040	23460	17070	11750	
		P	25600	23500	21200	18680	16280	13810	11270	
6SILW-300	30	Q	89100	72770	58710	46630	36380	28120	20640	14340
		P	22000	20500	18960	17270	15430	14480	12590	10650
	40	Q	81410	64940	52170	41180	31880	23860	16960	11170
		P	26100	24100	21900	19610	17140	15500	13100	10680
	50	Q	70980	57620	46040	35940	27230	19850	13700	
		P	30100	27600	25000	22310	19710	16850	13790	
6SILW-400	30	Q	105040	85930	69400	55340	43360	33660	24850	17420
		P	27400	25500	23500	21200	18920	17070	14950	12960
	40	Q	96250	76920	61970	49150	38310	28860	20690	13820
		P	31900	29500	27000	24300	21400	18610	15800	13060
	50	Q	84250	68510	55040	43160	32920	24210	16890	
		P	36400	33500	30400	27040	23710	20210	16600	

* Refrigerating capacity relating to suction temperature 20°C , liquid without subcooling.

*  Additional cooling or limiting the suction temperature.

*  Additional cooling + Liquid spray device.

Model	Condensing Temperature		Evaporating Temperature										
			12.5	10	7.5	5	0	-5	-10	-15	-20	-25	-30
4SIHV-050	30	Q	24160	22130	20300	18530	15380	12650	10490	8240	6480	4980	3700
		P	2840	2970	3060	3130	3170	3120	2990	2800	2570	2320	2070
	40	Q	21580	19760	18070	16820	13610	11120	8950	7080	5470	4090	2920 ^R
		P	4000	4020	4020	3990	3860	3660	3400	3110	2800	2490	2210
	50	Q	18990	17350	15820	14380	11800	9540	7580	5890	4440 ^R	3190 ^R	
		P	5000	4930	4840	4720	4450	4120	3760	3390	3020	2670	
4SIHV-070	30	Q	36040	33070	30290	27720	23020	18970	15450	12410	9810	7590	5700
		P	4210	4370	4490	4570	4630	4560	4400	4150	3850	3510	3150
	40	Q	32180	29450	26930	24600	20340	17000	13460	10690	8320	6280	4540 ^R
		P	5830	5860	5860	5820	5660	5400	5060	4670	4240	3800	3360
	50	Q	28220	25840	23560	21480	17650	14340	11440	8940	6780 ^R	4920 ^R	
		P	7280	7190	7070	6930	6570	6140	5650	5130	4610	4090	
4SIHV-090	30	Q	43300	40490	36450	34060	28510	23660	19420	15800	12690	10030	7590
		P	5500	5650	5820	5790	5790	5670	5450	5130	4750	4310	3830
	40	Q	38900	36040	32600	30290	25250	20890	17060	13790	10980	8580	6460 ^R
		P	7450	7340	7360	7240	7030	6710	6300	5820	5280	4700	4100
	50	Q	34250	31780	28650	26630	22180	18260	14880	11960	9450 ^R	7250 ^R	
		P	9270	8960	8820	8650	8230	7720	7140	6500	5820	5120	
4SIHV-100	30	Q	47220	43360	39750	36380	30290	25000	20440	16460	13300	10120	7620
		P	5730	5840	5910	5940	5920	5770	5520	5160	4730	4210	3640
	40	Q	41830	38360	35150	32180	26730	22030	17930	14380	11330	8710	6470 ^R
		P	7410	7380	7320	7230	6970	6610	6170	5660	5100	4480	3840
	50	Q	36530	33460	30640	27970	23630	19010	15380	12260	9560 ^R	7270 ^R	
		P	8990	8830	8650	8440	7970	7430	6820	6160	5460	4730	
4SIHV-120	30	Q	57100	52770	48100	44350	36930	30490	24950	20100	15980	12430	9410
		P	6900	7400	7130	7480	7390	7160	6800	6340	5810	5210	4580
	40	Q	50800	47520	42750	39800	33070	27130	22080	17650	13860	10610	7860 ^R
		P	9070	9320	8950	9120	8780	8310	7730	7070	6350	5590	4810
	50	Q	44000	42370	37250	35240	29110	23860	19180	15180	11740 ^R	8820 ^R	
		P	11070	11080	10640	10620	10030	9330	8540	7680	6780	5860	
4SIHV-150	30	Q	67720	62170	57020	52170	43360	35790	29210	23510	18620	14440	10890
		P	8330	8450	8520	8540	8450	8200	7810	7280	6650	5930	5140
	40	Q	60290	55340	50690	46330	38460	31630	26260	20590	16200	12420	9230 ^R
		P	10650	10570	10450	10290	9880	9350	8720	8000	7210	6360	5490
	50	Q	52770	48410	44250	40390	33460	27420	22180	17680	13800 ^R	10500 ^R	
		P	12860	12580	12270	11940	11230	10450	9600	8700	7740	6730	

* Refrigerating capacity relating to suction temperature 20°C , liquid without subcooling.

* Additional cooling or limiting the suction temperature.

* R: Additional cooling + The max. inhalation superheat is 20K.

Model	Condensing Temperature		Evaporating Temperature										
			12.5	10	7.5	5	0	-5	-10	-15	-20	-25	-30
4SIHV-200	30	Q	78310	71870	65930	60390	50290	41480	33910	27320	21680	16810	12680
		P	10600	10620	10590	10530	10290	9920	9410	8770	8020	7150	6180
	40	Q	69890	64150	58710	53660	44550	36630	29800	23860	18730	14360	10640 ^R
		P	13150	13020	12850	12630	12060	11340	10510	9580	8590	7540	6480
	50	Q	62520	56130	51380	46930	38860	31830	25740	20440	15890 ^R	12010 ^R	
		P	15740	15400	15010	14590	13650	12600	11460	10260	9020	7780	
4SIHV-250	30	Q	98310	90290	82760	75740	63060	52070	42520	35000	27230	21190	16100
		P	13890	13740	13560	13340	12840	12220	11480	10630	9670	8590	7410
	40	Q	88800	81480	74650	68210	56730	46680	37970	30490	24010	18480	13800 ^R
		P	16750	16470	16160	15820	15050	14170	13180	12070	10850	9520	8080
	50	Q	79700	74540	66920	61080	50590	41530	33610	26780	20890 ^R	15870 ^R	
		P	19560	19160	18740	18270	17250	16100	14830	13440	11940	10330	
4SIHV-300	30	Q	113060	103750	95040	86920	72370	59800	48810	40200	31330	24450	18650
		P	16420	16230	16010	15740	15110	14330	13440	12450	11360	10210	9000
	40	Q	101970	93560	85640	78310	65040	53460	43560	35000	27670	21430	16170 ^R
		P	19780	19460	19090	18680	17740	16670	15490	14200	12830	11400	9920
	50	Q	91380	85450	76630	69990	58010	47620	38610	30890	24260 ^R	18620 ^R	
		P	2340	2290	2230	2170	20400	19040	17570	16050	14490	12910	
6SIHW-350	30	Q	147610	135530	124250	113650	94640	78210	63860	52520	40890	31880	24160
		P	20900	20600	20400	20000	19270	18340	17240	15960	14520	12900	11120
	40	Q	133250	122270	112070	102470	85140	70090	57020	45740	36040	27770	20690 ^R
		P	25200	24700	24300	23700	22600	21300	19780	18120	16290	14300	12140
	50	Q	119690	111910	100390	91770	76030	62370	50490	40190	31380 ^R	23810 ^R	
		P	29400	28800	28100	27400	25900	24200	22300	20200	17920	15500	
6SIHW-400	30	Q	169590	155630	142660	130480	108600	89690	73260	60300	47030	36730	28020
		P	24600	24400	24000	23600	22700	21500	20200	18680	17050	15320	13510
	40	Q	153050	140380	128500	117410	97520	80290	65340	52470	41480	32130	24260 ^R
		P	29700	29200	28600	28000	26600	25000	23200	21300	19260	17110	14890
	50	Q	137120	128270	115040	105040	87120	71480	57920	46330	36380 ^R	27920 ^R	
		P	35200	34400	33500	32600	30700	28600	26400	24100	21700	19380	
6SIHW-500	30	Q	199390	182950	167710	153450	127810	105630	86430	71310	55740	43710	33560
		P	31900	31400	30800	30200	28700	27100	25300	23300	21200	18970	16660
	40	Q	179880	165030	151270	138400	115140	94940	77520	62470	49600	38660	29400 ^R
		P	37600	36900	36100	35200	33300	31300	29000	26600	24000	21300	18440
	50	Q	161570	151200	135730	124050	103060	84840	69000	55440	43810 ^R	33910 ^R	
		P	43000	42100	41100	40100	37900	35500	32800	29900	26800	23500	

- * Refrigerating capacity relating to suction temperature 20°C , liquid without subcooling.
- * Additional cooling or limiting the suction temperature.
- * R: Additional cooling + The max. inhalation superheat is 20K.

Model	Condensing Temperature		Evaporating Temperature								
			-5	-10	-15	-20	-25	-30	-35	-40	-45
4SILV-030E	30	Q	13580	11220	9170	7400	5880	4680	3470	2550	1780
		P	3850	3660	3440	3180	2900	2580	2240	1880	1500
	40	Q	11440	9420	7660	6140	4830	3710	2760	1960	1300
		P	4420	4100	3760	3400	3030	2630	2230	1820	1400
	50	Q	9360	7660	6200	5020	3820	2880	2090	1420	
		P	4910	4480	4040	3590	3130	2670	2220	1770	
4SILV-050E	30	Q	20890	17250	14080	11360	9010	7010	5420	3890	2700
		P	5520	5290	4990	4620	4180	3700	3190	2660	2110
	40	Q	17470	14370	11690	9550	7370	5660	4210	2980	1960
		P	6340	5950	5500	4990	4430	3830	3220	2600	1980
	50	Q	14160	11610	9400	7470	5820	4400	3190	2170	
		P	7070	6530	5930	5290	4620	3920	3220	2520	
4SILV-060IE	30	Q	25000	21430	17430	14020	11110	8640	6580	4780	3420
		P	6610	6290	5880	5400	4870	4310	3740	3100	2630
	40	Q	21180	18170	14700	11730	9220	7110	5350	3890	2540
		P	7660	7140	6540	5900	5220	4440	3860	3210	2470
	50	Q	17330	14730	11500	9410	7310	5630	4180	2980	
		P	8550	7830	7070	6200	5370	4670	3900	3170	
4SILV-060E	30	Q	26780	22080	18370	14490	11480	8900	6710	4870	3340
		P	7170	6700	6180	5620	5020	4400	3760	3110	2460
	40	Q	22520	18480	14990	11970	9380	7160	5270	3680	2360
		P	8120	7450	6760	6030	5280	4520	3740	2950	2150
	50	Q	17330	14820	11930	9430	7300	5460	3910	2610	
		P	8550	7980	7120	6260	5410	4550	3670	2780	
4SILV-080E	30	Q	33460	27420	22230	17790	14010	10820	8150	5940	4150
		P	8320	7890	7340	6690	5980	5240	4500	3790	3070
	40	Q	28310	23070	18560	14720	11460	8730	6450	4580	2960
		P	9700	8960	8130	7240	6330	5420	4540	3720	2810
	50	Q		18670	14890	11660	8940	6670	4790	3270	
		P		9770	8690	7580	6490	5420	4430	3520	
4SILV-100E	30	Q	38680	31280	25490	20490	16230	12560	9450	6840	4640
		P	10070	9370	8640	7870	7060	6220	5340	4430	3480
	40	Q	32620	26240	21290	16960	13270	10120	7440	5190	3320
		P	11390	10450	9470	8450	7410	6350	5300	4250	3220
	50	Q		21290	17120	13520	10440	7810	5580	3720	
		P		11260	10040	8800	7530	6280	5050	3880	

* Refrigerating capacity relating to suction temperature 20°C , liquid without subcooling.

* Additional cooling or limiting the suction temperature.

Model	Condensing Temperature		Evaporating Temperature								
			-5	-10	-15	-20	-25	-30	-35	-40	-45
4SILV-120E	30	Q	43560	35890	29250	23510	18620	14430	10890	7900	5520
		P	11880	11150	10300	9350	8350	7300	6230	5190	4180
	40	Q	36930	30290	24550	19610	15350	11720	8650	6060	3910
		P	13390	12330	11180	9970	8710	7440	6190	4990	3870
	50	Q		25100	19800	15660	12090	9030	6440	4260	
		P		13280	11830	10370	8910	7450	6010	4600	
4SILV-150E	30	Q	57920	47920	39300	31880	25490	20450	15400	11510	8270
		P	15780	14840	13790	12630	11400	10100	8770	7430	6100
	40	Q	49350	40740	33260	26830	21290	16560	12530	9150	6320
		P	18160	16800	15340	13820	12250	10650	9050	7470	5930
	50	Q		33610	27320	21830	17160	13140	9720	6850	
		P		18500	16670	14800	12910	11030	9170	7370	
4SILV-200E	30	Q	66430	54950	45850	36380	29060	22770	17420	12930	9170
		P	18220	17120	15890	14550	13120	11620	10080	8530	6970
	40	Q	56630	46830	38310	30890	24550	19060	14390	10430	7090
		P	20940	19360	17680	15930	14130	12300	10470	8650	6890
	50	Q		38360	31330	25200	19900	15330	11390	8040	
		P		21250	19150	17020	14870	12730	10630	8600	
6SILW-250E	30	Q	87020	71780	58710	47320	37620	30000	22420	16570	11730
		P	23500	22150	20580	18830	16940	14950	12890	10810	8750
	40	Q	73950	60980	49700	40000	31580	24450	18400	13310	9040
		P	27200	25180	23000	20680	18280	15820	13360	10920	8540
	50	Q		50000	40740	32670	25690	19720	14610	10290	
		P		27780	25020	22180	19310	16430	13590	10830	
6SILW-300E	30	Q	97320	80390	65740	53060	42270	33020	25150	18570	13080
		P	26770	25070	23120	21200	19080	16840	14540	12170	9760
	40	Q	83160	68610	56030	45090	35690	27620	20790	14980	10110
		P	30860	28500	26000	23380	20680	17900	15070	12210	9340
	50	Q		57020	46430	37220	29250	22370	16550	11590	
		P		31430	28350	25180	21940	18670	15370	12060	
6SILW-400E	30	Q	117610	97120	80900	64050	50890	39700	30200	22180	15440
		P	31460	29740	27690	25370	22840	20140	17340	14490	11630
	40	Q	99890	82270	66920	53760	42370	32620	24350	17390	11560
		P	36000	33430	30590	27550	24360	21060	17730	14400	11140
	50	Q		67620	54750	43610	33960	25790	18800	12930	
		P		36680	33080	29330	25490	21620	17760	13980	

* Refrigerating capacity relating to suction temperature 20°C , liquid without subcooling.

* Additional cooling or limiting the suction temperature.

Model	Condensing Temperature		Evaporating Temperature										
			7.5	5	0	-5	-10	-15	-20	-25	-30	-35	-40
4SIHV-050E	30	Q	21330	19590	16420	13670	11290	9230	7440	5910	4600	3490 ^R	2550 ^R
		P	3780	3790	3760	3670	3520	3320	3070	2790	2480	2150	1810
	40	Q	18060	16570	13880	11530	9480	7710	6180	4950	3720	2760 ^R	1950 ^R
		P	4650	4600	4460	4250	3990	3690	3350	2980	2590	2180	1760
	50	Q	14820	13590	11360	9410	7700	6220	4930	3820	2870	2070 ^R	1400 ^R
		P	5440	5330	5070	4750	4390	3980	3550	3100	2620	2140	1650
4SIHV-070E	30	Q	32270	29600	24750	21010	16950	13810	11100	8770	6790	5110 ^R	3680 ^R
		P	5490	5520	5510	5390	5180	4880	4520	4100	3630	3120	2590
	40	Q	27230	24950	20890	17320	14210	11510	9180	7180	5450	4000 ^R	2770 ^R
		P	6810	6750	6550	6260	5880	5430	4910	4350	3740	3110	2470
	50	Q	22280	20390	17040	14090	11500	9260	7310	5750	4200	2980 ^R	1960 ^R
		P	7980	7830	7460	7000	6460	5860	5200	4500	3780	3030	2280
4SIHV-090E	30	Q	36620	30430	25040	20430	16430	14020	11110	8640	6580 ^R	4880 ^R	
		P	6910	6820	6610	6290	5880	5400	4870	4310	3740	3170	
	40	Q	31270	25880	21180	17170	14700	11730	9220	7110	5350 ^R	3890 ^R	
		P	8420	8100	7660	7140	6540	5900	5220	4540	3860	3210	
	50	Q	25830	21280	17330	14930	12000	9510	7410	5630	4180 ^R	2980 ^R	
		P	9750	9190	8550	7830	7070	6270	5470	4670	3900	3170	
4SIHV-100E	30	Q	42320	38810	32470	26980	22180	18420	14460	11380	8720	6460 ^R	4530 ^R
		P	7140	7130	7010	6760	6410	5960	5450	4880	4270	3640	3000
	40	Q	35740	32770	27320	22620	18490	14920	11830	9170	6890	4950 ^R	3320 ^R
		P	8670	8540	8180	7700	7140	6500	5800	5070	4310	3550	2800
	50	Q	29250	26780	22280	18310	14870	11890	9320	7250	5240	3650 ^R	2340 ^R
		P	9970	9710	9130	8440	7680	6870	6010	5130	4260	3390	2570
4SIHV-120E	30	Q	51500	47710	40540	33510	27420	22230	17750	13960	10760	8100 ^R	5890 ^R
		P	8630	8520	8430	8160	7740	7200	6570	5880	5170	4450	3760
	40	Q	43500	40380	33350	28260	22970	18480	14630	11390	8660	6410 ^R	4550 ^R
		P	10660	10430	10000	9420	8730	7940	7090	6210	5340	4490	3710
	50	Q	35400	33110	27220	23070	18620	14840	11610	8910	6650	4800 ^R	3300 ^R
		P	12280	12070	11320	10450	9500	8480	7440	6400	5390	4450	3600
4SIHV-150E	30	Q	60890	55840	47570	38660	31780	25740	20590	16160	12370	9150 ^R	6440 ^R
		P	10230	10190	9960	9580	9060	8430	7700	6900	6040	5140	4230
	40	Q	51680	47370	39550	32720	26780	21630	17190	13360	10090	7320 ^R	4970 ^R
		P	12410	12140	11510	10790	9990	9110	8180	7190	6170	5130	4070
	50	Q	42170	38610	32180	26480	21580	17260	13540	10360	7630	5330 ^R	3390 ^R
		P	14270	13780	12780	11730	10660	9550	8430	7280	6110	4940	3750

* Refrigerating capacity relating to suction temperature 20°C , liquid without subcooling.

* Additional cooling or limiting the suction temperature.

* R: Preferably use type 2 motor.

Model	Condensing Temperature		Evaporating Temperature										
			7.5	5	0	-5	-10	-15	-20	-25	-30	-35	-40
4SIHV-200E	30	Q	70290	64450	53960	44800	36830	29950	24010	18880	14490	10750 ^R	7580 ^R
		P	12240	12200	11940	11470	10820	10040	9140	8160	7120	6070	5020
	40	Q	59900	54850	45790	37820	30940	25450	19800	15370	11610	8420 ^R	5760 ^R
		P	14780	14490	13790	12910	11910	10800	9620	8400	7160	5950	4780
	50	Q	49400	45190	37520	30790	25000	19950	15600	11890	8750	6120 ^R	3940 ^R
		P	16780	16280	15180	13950	12630	11240	9810	8380	6970	5630	4370
4SIHV-250E	30	Q	89790	82370	69000	57320	47270	38560	31040	24550	19020	14320 ^R	10360 ^R
		P	16140	16070	15720	15140	14360	13410	12320	11110	9810	8460	7080
	40	Q	76630	70290	58910	48910	40240	32670	26710	20590	15770	11680 ^R	8240 ^R
		P	19560	19220	18370	17320	16110	14760	13310	11780	10200	8600	7000
	50	Q	63860	58510	49010	40590	33260	26930	21380	16660	12610	9170 ^R	6280 ^R
		P	22780	22180	20840	19330	17710	15980	14180	12340	10490	8650	6860
4SIHV-300E	30	Q	102760	94350	79100	65840	54350	45350	35890	28510	22230	16870 ^R	12360 ^R
		P	19210	19070	18570	17810	16840	15700	14410	13020	11570	10090	8610
	40	Q	88210	80980	67910	56430	46530	37870	30390	23960	18420	13720 ^R	9750 ^R
		P	23370	22880	21730	20380	18880	17260	15560	13810	12060	10330	8680
	50	Q	73560	67520	56530	46930	38510	31190	24850	19380	14690	10700 ^R	7340 ^R
		P	27010	26200	24460	22580	20600	18560	16500	14450	12450	10540	8760
6SIHW-350E	30	Q	134640	123550	103460	86030	70880	57820	46530	37570	28510	21480 ^R	15560 ^R
		P	25110	24840	24070	23040	21770	20290	18640	16830	14910	12890	10810
	40	Q	115140	105530	88410	73360	60290	48960	39200	30790	23560	17490 ^R	12360 ^R
		P	29810	29200	27790	26140	24300	22290	20140	17880	15530	13130	10710
	50	Q	95630	89490	73360	60790	49900	40290	32080	25000	18970	13860 ^R	9570 ^R
		P	34170	33230	31190	28960	26560	24040	21410	18710	15960	13200	10450
6SIHW-400E	30	Q	154540	141770	118800	98900	81680	68070	53760	42720	33260	25290 ^R	18540 ^R
		P	30460	29910	28660	27200	25570	23770	21820	19750	17560	15280	12930
	40	Q	132070	121180	101670	84550	69600	56730	45540	35940	27720	20690 ^R	14790 ^R
		P	35490	34610	32700	30620	28380	26020	23540	20960	18300	15570	12800
	50	Q	109690	100780	84550	70190	57720	46880	37420	29250	22730	16290 ^R	11220 ^R
		P	40190	38970	36420	33730	30910	27990	24990	21920	18790	15630	12460
6SIHW-500E	30	Q	182560	170990	140780	117410	97120	79600	64550	51580	40490	31090 ^R	23220 ^R
		P	36240	35760	34490	32870	30950	28790	26430	23940	21380	18790	16230
	40	Q	156320	143550	120480	100290	82760	67620	54450	43160	33510	25340 ^R	18430 ^R
		P	43130	42100	39800	37220	34430	31470	28400	25280	22150	19090	16140
	50	Q	129690	119000	99790	82960	69590	55440	44350	34800	26680	19760 ^R	13950 ^R
		P	49800	48210	44850	41300	37600	33830	30020	26240	22530	18970	15590

* Refrigerating capacity relating to suction temperature 20°C , liquid without subcooling.

* Additional cooling or limiting the suction temperature.

* R: Preferably use type 2 motor.

Model	Condensing Temperature	Evaporating Temperature										
		12.5	10	7.5	5	0	-5	-10	-15	-20	-25	
4SIHV-050E	30	Q	23910	21780	19800	18350	14730	11920	9510	7460	5720	4260
		P	2820	2940	3020	3070	3080	2990	2820	2600	2340	2080
	40	Q	20890	18980	17230	15600	12690	10190	8040	6200	4640	3330
		P	3900	3910	3890	3840	3670	3430	3130	2810	2490	2180
	50	Q	17810	16170	14640	13220	10660	8640	6570	4950	3570	2410
		P	4910	4820	4700	4550	4220	3850	3450	3050	2670	2340
4SIHV-070E	30	Q	37120	33170	30200	27420	22470	18230	14590	11480	8840	6610
		P	4330	4470	4560	4610	4600	4460	4230	3920	3570	3200
	40	Q	31530	28710	26090	23660	19290	15530	12310	9550	7210	5240
		P	5770	5760	5710	5630	5390	5050	4650	4220	3780	3360
	50	Q	26780	24350	22080	20000	16180	12910	10100	7850	5650	3920
		P	7170	7030	6860	6660	6210	5700	5160	4620	4110	3660
4SIHV-090E	30	Q	44000	40100	36550	33200	27300	22200	17840	14110	10950	8282
		P	5770	5820	5830	5800	5640	5380	5030	4630	4190	3750
	40	Q	38200	34800	31600	28700	23450	18950	15080	11780	8970	6610
		P	7160	7080	6960	6820	6450	6010	5520	5010	4500	4040
	50	Q	32400	29450	26700	24200	19640	15710	12330	9440	6980	4900
		P	8640	8430	8200	7950	7400	6810	6200	5600	5040	4550
4SIHV-100E	30	Q	45940	41930	38160	35400	28510	23170	18560	14640	11320	8490
		P	5640	5730	5770	5780	5690	5480	5160	4740	4240	3680
	40	Q	39850	36330	33070	30050	24650	20350	15930	12490	9560	7090
		P	7260	7200	7100	6980	6650	6220	5720	5150	4530	3880
	50	Q	33860	30840	28020	25440	20740	16700	13240	10290	7770	5660
		P	8770	8570	8340	8100	7550	6940	6270	5550	4800	4030
4SIHV-120E	30	Q	55600	50700	46200	42000	34500	28100	22600	17860	13850	10460
		P	6800	6900	6970	6980	6890	6650	6270	5770	5170	4490
	40	Q	48450	44200	40250	36550	29950	24300	19430	15260	11720	8730
		P	8890	8810	8690	8530	8130	7620	7010	6330	5600	4830
	50	Q	41200	37500	34100	30950	25250	20400	16190	12610	9590	7040
		P	10800	10550	10270	9970	9290	8540	7720	6850	5940	5000
4SIHV-150E	30	Q	65930	60090	54750	49700	40790	33120	27070	20940	16160	12140
		P	8180	8270	8300	8280	8110	7770	7290	6680	5970	5180
	40	Q	57520	52370	47670	43260	35440	28660	22870	17890	13670	10110
		P	10420	10290	10120	9920	9410	8790	8070	7280	6430	5540
	50	Q	49010	44650	40540	36780	30000	24160	19140	14880	11490	8240
		P	12500	12160	11810	11430	10630	9760	8840	7860	6830	5750

* Refrigerating capacity relating to suction temperature 20°C , liquid without subcooling.

* Additional cooling or limiting the suction temperature.

* Additional cooling + The max. inhalation superheat is 20K.

Model	Condensing Temperature	Evaporating Temperature										
		12.5	10	7.5	5	0	-5	-10	-15	-20	-25	
4SIHV-200E	30	Q	76130	69500	63260	57520	47220	39140	30790	24300	18810	14160
		P	10360	10330	10260	10160	9830	9370	8770	8050	7210	6270
	40	Q	66630	60790	55240	50190	41090	33890	26480	20690	15810	11650
		P	12850	12660	12420	12140	11450	10630	9700	8680	7620	6530
	50	Q	56930	51780	47070	42670	34750	27970	22130	17120	12880	9310
		P	15300	14880	14420	13930	12870	11710	10470	9190	7890	6600
4SIHV-250E	30	Q	96920	88510	80690	73460	60490	50350	39800	31680	24750	18930
		P	13140	13140	13090	13010	12730	12300	11730	11030	10200	9240
	40	Q	85240	77810	70880	64450	52870	42970	34450	27180	20990	15740
		P	16700	16470	16210	15900	15180	14320	13320	12200	10950	9580
	50	Q	73760	68580	61180	55540	45340	36630	29110	22720	17250	12640
		P	20100	19580	19070	18520	17310	15960	14490	12890	11180	9350
4SIHV-300E	30	Q	110980	101280	92170	83850	68900	56130	45140	35840	27970	21330
		P	16040	15900	15730	15540	15070	14490	13780	12940	11960	10830
	40	Q	97810	89100	81080	73660	60290	48810	39010	30690	23610	17720
		P	19800	19470	19100	18710	17830	16810	15650	14350	12890	11270
	50	Q	84050	78070	69400	62870	51180	41180	32570	25290	19180	14050
		P	23400	22800	22200	21600	20200	18670	16980	15130	13120	10920
6SIHW-350E	30	Q	145430	132860	121080	110190	90780	75550	59800	47520	37170	28410
		P	19520	19520	19470	19380	19050	18510	17770	16810	15620	14190
	40	Q	128010	116820	106430	96720	79400	64550	51680	40790	31480	23610
		P	24700	24400	24000	23600	22700	21500	20100	18520	16650	14530
	50	Q	110680	100880	91770	83360	68110	54950	43710	34110	25890	18980
		P	29800	29100	28500	27700	26100	24200	22000	19610	16950	14020
6SIHW-400E	30	Q	166520	151870	138400	125830	103360	85850	67720	53760	41980	32030
		P	23700	23500	23400	23100	22500	21600	20600	19330	17850	16150
	40	Q	146820	133750	121670	110480	90390	73260	58510	46040	35440	26580
		P	29400	29000	28500	27900	26600	25100	23400	21400	19250	16810
	50	Q	126130	117060	104250	94350	76820	61780	48910	37970	28760	21090
		P	34800	34000	33100	32200	30200	27900	25400	22600	19580	16280
6SIHW-500E	30	Q	196420	179390	163650	149000	122860	100390	81180	64750	50790	39010
		P	29500	29300	29000	28600	27800	26700	25400	23800	22000	19970
	40	Q	174040	158900	144840	131770	108410	88210	70980	56130	43610	33020
		P	35800	35200	34500	33800	32200	30400	28300	26000	23400	20500
	50	Q	151670	141200	126030	114440	93850	76030	60690	47620	36530	27130
		P	42500	41500	40400	39200	36700	34000	31000	27800	24300	20500

* Refrigerating capacity relating suction temperature 20°C , liquid without subcooling.

* Additional cooling or limiting the suction temperature.

* Additional cooling + The max. inhalation superheat is 20K.

Model	Condensing Temperature	Evaporating Temperature											
		12.5	10	7.5	5	0	-5	-10	-15	-20	-25	-30	
4SILV-030E	30	Q	15800	14670	13060	11840	9660	7790	6200	4850	3700	2750	1950
		P	2230	2210	2190	2150	2070	1950	1810	1650	1470	1260	1040
	40	Q	13930	12660	11490	10400	8450	6790	5370	4150	3130	2270	1550
		P	2640	2600	2550	2490	2360	2200	2020	1810	1580	1330	1050
	50	Q	12130	11020	9990	9030	7320	5840	4680	3500	2600	1840	1210
		P	3040	2960	2880	2800	2610	2410	2190	1940	1660	1360	1020
4SILV-050E	30	Q	24350	22230	20200	18320	15290	12130	9690	7620	5870	4400	3180
		P	3610	3550	3490	3420	3260	3080	2860	2620	2350	2050	1720
	40	Q	21480	19550	17760	16110	13130	10580	8400	6540	4980	3660	2570
		P	4300	4210	4120	4020	3790	3530	3230	2910	2560	2170	1750
	50	Q	18690	17000	15420	13970	11350	9100	7170	5530	4150	2990	2030
		P	4960	4840	4710	4570	4270	3930	3560	3150	2710	2230	1730
4SILV-060IE	30	Q	29550	26900	24450	22200	18170	14720	11770	9270	7170	5410	3950
		P	4350	4280	4200	4100	3890	3640	3350	3040	2700	2330	1950
	40	Q	26000	23650	21500	19490	15910	12830	10210	7980	6100	4520	3210
		P	5250	5130	5000	4850	4540	4180	3800	3380	2940	2480	2000
	50	Q	22550	20500	18630	16880	13740	11040	8730	6760	5100	3700	2540
		P	6080	5900	5720	5530	5110	4660	4170	3660	3130	2570	1990
4SILV-060E	30	Q	31230	28410	25840	23460	19190	15520	12400	9750	7510	5640	4170
		P	4450	4440	4400	4350	4190	3960	3690	3370	3020	2650	2260
	40	Q	27520	25050	22770	20590	16800	13520	10710	8330	6320	4620	3210
		P	5560	5440	5300	5140	4800	4420	4010	3570	3100	2630	2150
	50	Q	23810	21630	19620	17740	14670	11480	9000	6890	5100	3590	2340
		P	6490	6280	6060	5820	5320	4790	4240	3660	3090	2510	1950
4SILV-080E	30	Q	38400	35000	31800	28900	23600	19120	15280	12030	9280	6980	5080
		P	5050	5120	5160	5160	5050	4830	4530	4150	3730	3280	2840
	40	Q	33950	30900	28050	25400	20700	16670	13220	10290	7810	5730	3990
		P	6630	6520	6390	6240	5870	5430	4930	4400	3830	3260	2690
	50	Q	29350	26700	24200	21900	17730	14170	11110	8520	6320	4470	2930
		P	7880	7640	7380	7100	6520	5890	5230	4540	3840	3140	2440
4SILV-100E	30	Q	44400	40440	36780	33360	27270	22080	17610	13820	10620	7940	5700
		P	5880	6010	6080	6100	5990	5730	5330	4840	4300	3730	3170
	40	Q	39200	35640	32370	29350	23910	19220	15210	11800	8910	6470	4440
		P	7630	7560	7450	7290	6890	6380	5770	5110	4410	3700	3010
	50	Q	33860	30790	27920	25200	20810	16290	12740	9720	7160	5000	3250
		P	9110	8850	8560	8260	7580	6840	6050	5240	4400	3580	2770

* Refrigerating capacity relating to suction temperature 20°C , liquid without subcooling.

* Additional cooling or limiting the suction temperature.

Model	Condensing Temperature	Evaporating Temperature											
		12.5	10	7.5	5	0	-5	-10	-15	-20	-25	-30	
4SILV-120E	30	Q	50390	45840	41680	37870	30990	25100	20050	15770	12170	9150	6630
		P	7450	7400	7330	7220	6930	6550	6100	5580	5010	4410	3790
	40	Q	44850	40790	37820	33610	27420	22080	17500	13900	10340	7570	5270
		P	9160	8970	8750	8500	7950	7330	6650	5920	5170	4390	3610
	50	Q	39150	35590	32270	29210	23660	18900	14830	11370	8420	5960	3890
		P	10790	10450	10090	9710	8880	7990	7050	6100	5150	4220	3340
4SILV-150E	30	Q	68410	62170	56430	51080	41530	33360	26430	20640	15760	11720	8420
		P	10400	10070	9740	9410	8740	8070	7380	6670	5950	5200	4420
	40	Q	60690	55140	49900	45140	36630	29300	23120	17920	13560	9960	7010
		P	12460	11930	11430	10930	9970	9040	8130	7230	6320	5390	4440
	50	Q	53560	49540	43960	39700	32080	25540	20050	15410	11540	8350	5740
		P	14240	13540	12870	12220	10990	9810	8690	7590	6510	5430	4340
4SILV-200E	30	Q	77720	70690	64150	58010	47220	37970	30150	23560	18010	13420	9670
		P	12450	12150	11830	11500	10780	10000	9160	8260	7310	6320	5280
	40	Q	69000	62670	56830	51380	41680	34090	26380	20490	15540	11450	8110
		P	14650	14140	13620	13090	12030	10950	9850	8730	7590	6440	5280
	50	Q	60890	55240	50000	45190	36580	29210	22970	17690	13300	9660	6700
		P	16670	15930	15200	14480	13060	11670	10310	8970	7660	6370	5100
6SILW-250E	30	Q	102760	93360	84740	76630	62370	50090	39700	30990	23660	17600	12630
		P	15620	15120	14620	14120	13120	12110	11080	10020	8930	7810	6640
	40	Q	91080	82760	74940	67820	54950	44010	34750	26880	20340	14950	10520
		P	18700	17920	17510	16410	14970	13570	12200	10850	9490	8100	6660
	50	Q	80290	72900	65930	60800	48110	38410	30100	23170	17330	12530	8620
		P	21400	20300	19330	18350	16490	14730	13040	11400	9780	8160	6510
6SILW-300E	30	Q	116720	106030	96230	87120	70880	57020	45240	35290	27030	20150	14510
		P	18680	18230	17760	17260	16180	15010	13740	12400	10970	9480	7930
	40	Q	103550	94050	85240	77120	62570	50190	39600	30740	23310	17190	12160
		P	22000	21200	20400	19650	18050	16430	14770	13100	11390	9670	7920
	50	Q	91380	82960	75040	67820	54850	43810	34450	26530	20350	14500	10060
		P	25000	23900	22800	21700	19600	17510	15470	13460	11490	9550	7650
6SILW-400E	30	Q	137020	124540	113060	102370	83360	67220	53360	41780	32080	24010	17390
		P	22200	21600	21100	20500	19270	17910	16440	14870	13200	11440	9590
	40	Q	121670	110580	100290	90780	73760	59300	46930	36530	27870	20640	14750
		P	25800	24900	24000	23100	21200	19330	17390	15420	13420	11410	9380
	50	Q	107610	97710	88610	80090	64940	51980	41040	31780	24490	17620	12390
		P	29900	28500	27100	25800	23100	20600	18160	15790	13480	11230	9030

* Refrigerating capacity relating to suction temperature 25°C , liquid without subcooling.

* Additional cooling or limiting the suction temperature.

Model	Condensing Temperature		Evaporating Temperature								
			12.5	10	7.5	5	0	-5	-10	-15	-20
4SIHV-050E	50	Q	12080	11200	9960	9000	7300	5830	4570	3500	2600
		P	3190	3110	3020	2930	2720	2490	2240	1970	1670
	60	Q	10390	9430	8540	7720	6240	4960	3860	2930	2140
		P	3590	3490	3370	3250	3000	2720	2420	2090	1740
	70	Q	8710	7910	7160	6460	5310	4120	3180	2390	1700
		P	3990	3850	3710	3570	3270	2940	2580	2200	1790
4SIHV-070E	50	Q	18610	16930	15360	14190	11320	9080	7160	5520	4150
		P	4990	4860	4730	4580	4270	3920	3540	3130	2690
	60	Q	16000	14530	13180	11910	9650	7690	6030	4600	3410
		P	5620	5460	5280	5100	4700	4280	3820	3330	2800
	70	Q	13440	12210	11060	9980	8220	6400	4970	3760	2740
		P	6270	6060	5840	5610	5130	4630	4090	3510	2900
4SIHV-090E	50	Q	22550	20550	18640	16890	13750	11040	8730	6770	5100
		P	6070	5900	5720	5530	5120	4660	4180	3660	3120
	60	Q	19250	17500	15870	14360	11650	9320	7320	5620	4180
		P	6860	6630	6390	6140	5620	5070	4490	3890	3250
	70	Q	15970	14520	13160	11900	9620	7660	5980	4560	3350
		P	7570	7290	6990	6690	6070	5430	4760	4060	3340
4SIHV-100E	50	Q	23960	21730	19660	17720	14270	11290	8740	6580	4750
		P	6180	6030	5850	5650	5190	4670	4100	3510	2910
	60	Q	20100	18180	16400	14750	11780	9230	7040	5190	3610
		P	6920	6660	6400	6110	5500	4860	4180	3500	2820
	70	Q	16280	15000	13230	11860	9410	7290	5470	3930	2630
		P	7430	7100	6760	6410	5680	4940	4200	3450	2730
4SIHV-120E	50	Q	29100	26400	23900	21550	17390	13810	10750	8140	5940
		P	7510	7330	7120	6880	6340	5730	5060	4370	3660
	60	Q	24450	22150	19990	18000	14420	11340	8710	6460	4560
		P	8490	8180	7860	7510	6790	6020	5210	4400	3580
	70	Q	19850	17950	16170	14520	11540	8970	6760	4880	3290
		P	9150	8750	8330	7910	7040	6140	5240	4330	3430
4SIHV-150E	50	Q	34350	31140	28170	25390	20440	16190	12550	9460	6860
		P	8780	8540	8280	8000	7360	6650	5880	5070	4240
	60	Q	28960	26240	24140	21290	17000	13320	10170	7470	5210
		P	9800	9440	9060	8670	7830	6940	6010	5050	4070
	70	Q	23610	21330	19190	17210	13630	10540	7880	5610	3680
		P	10580	10120	9640	9150	8140	7090	6000	4890	3760

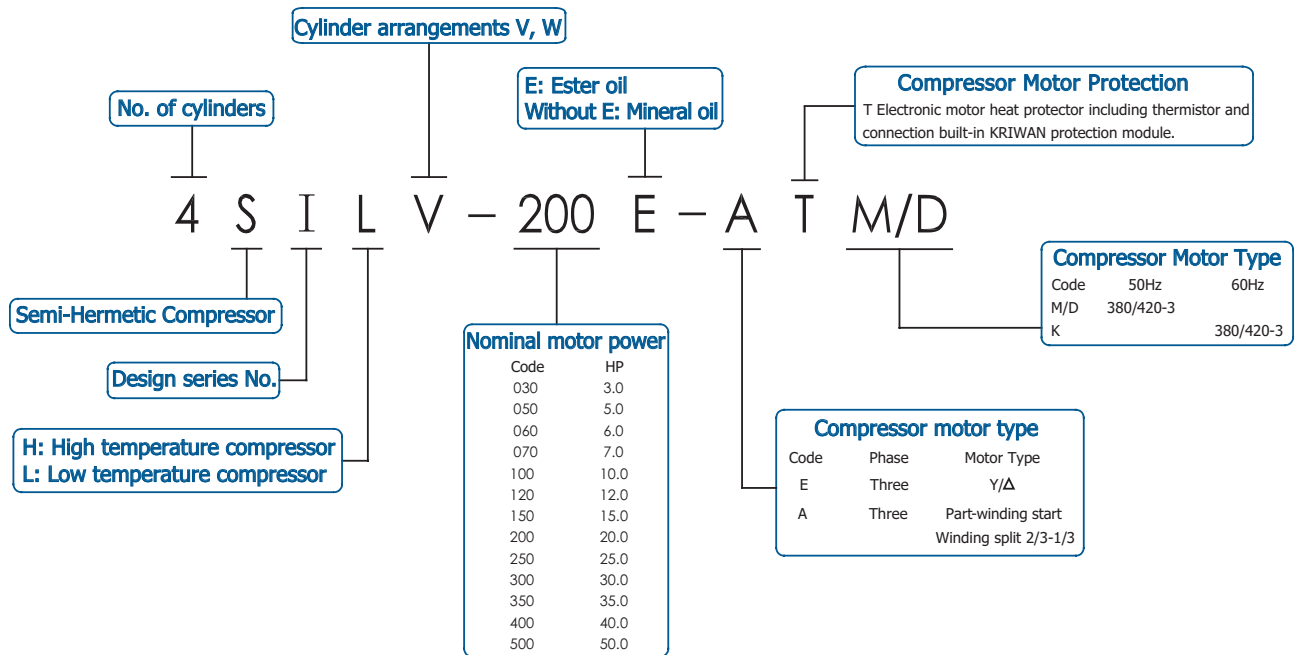
* Refrigerating capacity relating to suction temperature 20°C , liquid without subcooling.

* Additional cooling or limiting the suction temperature.

Model	Condensing Temperature		Evaporating Temperature								
			12.5	10	7.5	5	0	-5	-10	-15	-20
4SIHV-200E	50	Q	39850	36140	32670	29500	23710	18780	14540	10930	7860
		P	10420	10110	9770	9410	8630	7770	6850	5880	4890
	60	Q	33560	30340	27370	25100	19650	15370	11710	8600	5960
		P	11650	11200	10720	10220	9180	8100	6980	5840	4700
	70	Q	27230	24600	22130	19800	15680	12120	9060	6450	4340
		P	12590	12010	11420	10820	9570	8300	7020	5750	4520
4SIHV-250E	50	Q	53560	48560	43960	39700	32080	25540	20050	15410	11540
		P	13770	13130	12520	11920	10780	9680	8620	7580	6550
	60	Q	46630	42270	38210	34450	27720	21980	17150	13060	9660
		P	15040	14270	13530	12810	11440	10130	8890	7690	6530
	70	Q	39850	36090	32570	29300	23510	18550	14650	10830	7900
		P	16090	15210	14360	13530	11960	10480	9070	7740	6450
4SIHV-300E	50	Q	60890	56360	50000	45190	36580	29210	22970	17690	13300
		P	16090	15420	14760	14100	12790	11500	10220	8940	7670
	60	Q	53160	48160	43560	39300	31680	25200	19690	15060	11190
		P	17650	16800	15960	15140	13540	11990	10490	9030	7600
	70	Q	45440	41180	37220	33510	26930	21330	16550	12550	9410
		P	19220	18160	17140	16150	14250	12460	10750	9120	7550
6SIHW-350E	50	Q	80290	72860	65930	59600	48110	38410	30100	23170	17330
		P	20700	19720	18800	17900	16180	14530	12940	11380	9840
	60	Q	71410	63460	57320	51680	41630	33070	25740	19610	14500
		P	22600	21400	20300	19240	17170	15210	13340	11540	9800
	70	Q	59800	54150	48910	44010	35290	27870	21530	16260	11860
		P	24200	22800	21600	20300	17950	15730	13620	11610	9680
6SIHW-400E	50	Q	91380	82960	75040	67820	54850	43810	34450	26530	19950
		P	24100	23100	22100	21200	19200	17260	15330	13420	11510
	60	Q	79700	72270	66660	59000	47570	37820	29550	22570	16790
		P	26500	25200	24000	22700	20300	17990	15740	13550	11410
	70	Q	68210	61780	55840	50290	40440	31980	24850	18830	13840
		P	28800	27300	25700	24200	21400	18700	16130	13690	11330
6SIHW-500E	50	Q	107610	97710	88610	80090	64940	51980	41040	31780	24010
		P	29300	28000	26700	25400	22900	20500	18140	15850	13610
	60	Q	94050	87160	77320	69890	56530	45090	35390	27230	20440
		P	32600	30800	29100	27500	24400	21400	18670	16050	13550
	70	Q	80690	73260	66230	59800	48260	38360	30000	22970	17080
		P	35200	33100	31200	29300	25800	22500	19390	16490	13720

* Refrigerating capacity based on suction temperature 25°C , liquid without supercooling.

* Additional cooling or limiting the suction temperature.



Technical Data

Model	4SILV-030 4SILV-030E	4SILV-050 4SILV-050E	4SILV-060I 4SILV-060IE	4SILV-060 4SILV-060E	4SILV-080 4SILV-080E	4SILV-100 4SILV-100E
Nominal Power	3	5	6	6	8	10
Number of Cylinders	4	4	4	4	4	4
Discharge volume (m ³ /h)	18.1/21.7	26.8/32.3	32.5/39.2	34.7/41.6	41.3/49.9	48.5/58.1
Starting Current (LRA) (A)						
ATM/D 380-420V 3PH 50 Hz				39	49	59
ETM/D 380-420V 3PH 50 Hz	44.2	62.2	82.4			
Max. Working Current (MCC) (A)						
ATM/D 380-420V 3PH 50 Hz				14	17	21
ETM/D 380-420V 3PH 50 Hz	9.2	13.5	15.9			
Pipe Connection (In)						
Discharge Line (DL)	5/8"	7/8"	7/8"	7/8"	1 1/8"	1 1/8"
Suction Line (SL)	7/8"	1 1/8"	1 1/8"	1 1/8"	1 3/8"	1 3/8"
Crankcase Heater Power (W)	100	100	100	140	140	140
Dimensions						
Length	432	432	458	634	634	634
Width	304	304	304	306	306	306
Height (without fan)	350	353	353	385	385	385
Installation Size of Footing	293 × 198	293 × 198	293 × 198	367 × 256	367 × 256	367 × 256
Oil Filling Volume (L)	2.0	2.0	2.0	2.6	2.6	2.6
Weight (kg)	82	85.5	91	129	134	139

Technical Data

Model	4SILV-120 4SILV-120E	4SILV-150 4SILV-150E	4SILV-200 4SILV-200E	6SILW-250 6SILW-250E	6SILW-300 6SILW-300E	6SILW-400 6SILW-400E
Nominal Power	12	15	20	25	30	40
Number of Cylinders	4	4	4	6	6	6
Discharge volume (m ³ /h)	56.2/67.7	73.7/88.8	84.6/101.9	110.5/133.4	126.8/153	151.6/183
Starting Current (LRA) (A)						
ATM/D 380-420V 3PH 50 Hz	69	81	97	116	135	180
Max. Working Current (MCC) (A)						
ATM/D 380-420V 3PH 50 Hz	24	31	37	45	53	78
Pipe Connection (In)						
Discharge Line (DL)	1 1/8"	1 1/8"	1 1/8"	1 3/8"	1 3/8"	1 5/8"
Suction Line (SL)	1 3/8"	1 5/8"	2 1/8"	2 1/8"	2 1/8"	2 1/8"
Crankcase Heater Power (W)	140	160	160	160	160	160
Dimensions						
Length	634	693	711	765	765	795
Width	306	417	417	452	452	452
Height (without fan)	385	453	453	445	445	445
Installation Size of Footing	367 × 256	381 × 305	381 × 305	381 × 305	381 × 305	381 × 305
Oil Filling Volume (L)	2.6	4.0	4.5	4.75	4.75	4.75
Weight (kg)	141	183	192	224	228	239

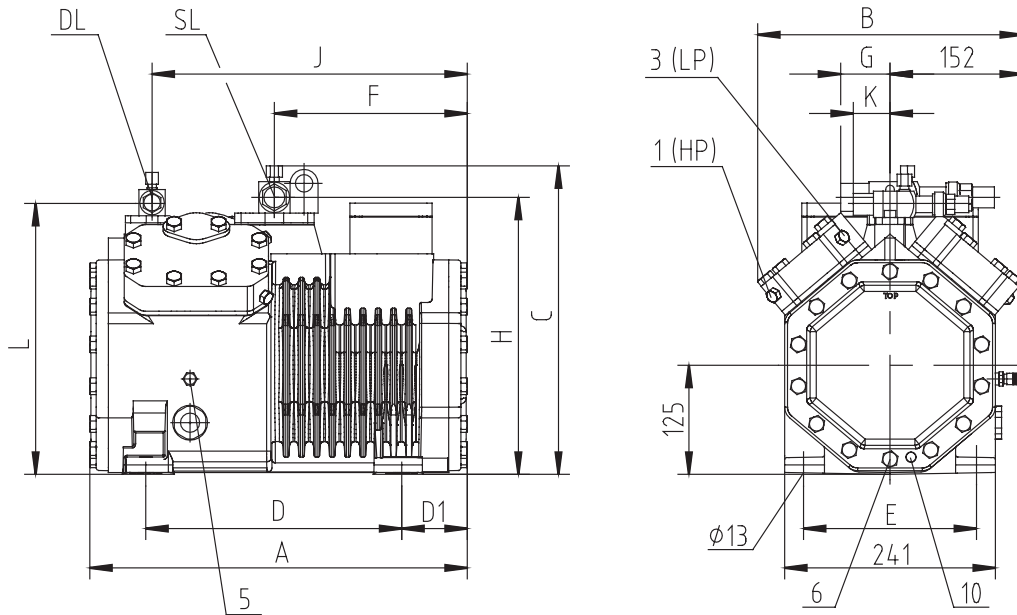
Technical Data

Model	4SIHV-050 4SIHV-050E	4SIHV-070 4SIHV-070E	4SIHV-090 4SIHV-090E	4SIHV-100 4SIHV-100E	4SIHV-120 4SIHV-120E	4SIHV-150 4SIHV-150E
Nominal Power	5	7	9	10	12	15
Number of Cylinders	4	4	4	4	4	4
Discharge volume (m ³ /h)	18.1/21.7	26.8/32.3	32.5/39.2	34.7/41.6	41.3/49.9	48.5/58.1
Starting Current (LRA) (A)						
ATM/D 380-420V 3PH 50 Hz				59	69	81
ETM/D 380-420V 3PH 50 Hz	62.2	82.4	82.4			
Max. Working Current (MCC) (A)						
ATM/D 380-420V 3PH 50 Hz				21	24	31
ETM/D 380-420V 3PH 50 Hz	10.8	15.9	20.0			
Pipe Connection (In)						
Discharge Line (DL)	5/8"	7/8"	7/8"	7/8"	1 1/8"	1 1/8"
Suction Line (SL)	7/8"	1 1/8"	1 1/8"	1 1/8"	1 3/8"	1 5/8"
Crankcase Heater Power (W)	100	100	100	140	140	140
Dimensions						
Length	432	458	458	634	634	657
Width	304	304	304	306	306	306
Height (without fan)	350	353	353	385	385	385
Installation Size of Footing	293 × 198	293 × 198	293 × 198	367 × 256	367 × 256	367 × 256
Oil Filling Volume (L)	2.0	2.0	2.0	2.6	2.6	2.6
Weight (kg)	86	88.5	91	139	141	147

Technical Data

Model	4SIHV-200 4SIHV-200E	4SIHV-250 4SIHV-250E	4SIHV-300 4SIHV-300E	6SIHW-350 6SIHW-350E	6SIHW-400 6SIHW-400E	6SIHW-500 6SIHW-500E
Nominal Power	20	25	30	35	40	50
Number of Cylinders	4	4	4	6	6	6
Discharge volume (m ³ /h)	56.2/67.7	73.7/88.8	84.6/101.9	110.5/133.4	126.8/153	151.6/183
Starting Current (LRA) (A)						
ATM/D 380-420V 3PH 50 Hz/ 440-480V 3PH 60 Hz	97	116	135	147	180	226
Max. Working Current (MCC) (A)						
ATM/D 380-420V 3PH 50 Hz/ 440-480V 3PH 60 Hz	37	45	53	61	78	92
Pipe Connection (In)						
Discharge Line (DL)	1 1/8"	1 1/8"	1 1/8"	1 3/8"	1 3/8"	1 5/8"
Suction Line (SL)	1 5/8"	2 1/8"	2 1/8"	2 1/8"	2 1/8"	2 1/8"
Crankcase Heater Power (W)	140	160	160	160	160	160
Dimensions						
Length	657	741	741	795	795	795
Width	306	417	417	452	452	452
Height (without fan)	385	453	453	445	445	445
Installation Size of Footing	367 × 256	381 × 305	381 × 305	381 × 305	381 × 305	381 × 305
Oil Filling Volume (L)	2.6	4.5	4.5	4.75	4.75	4.75
Weight (kg)	150	203	206	235	238	241

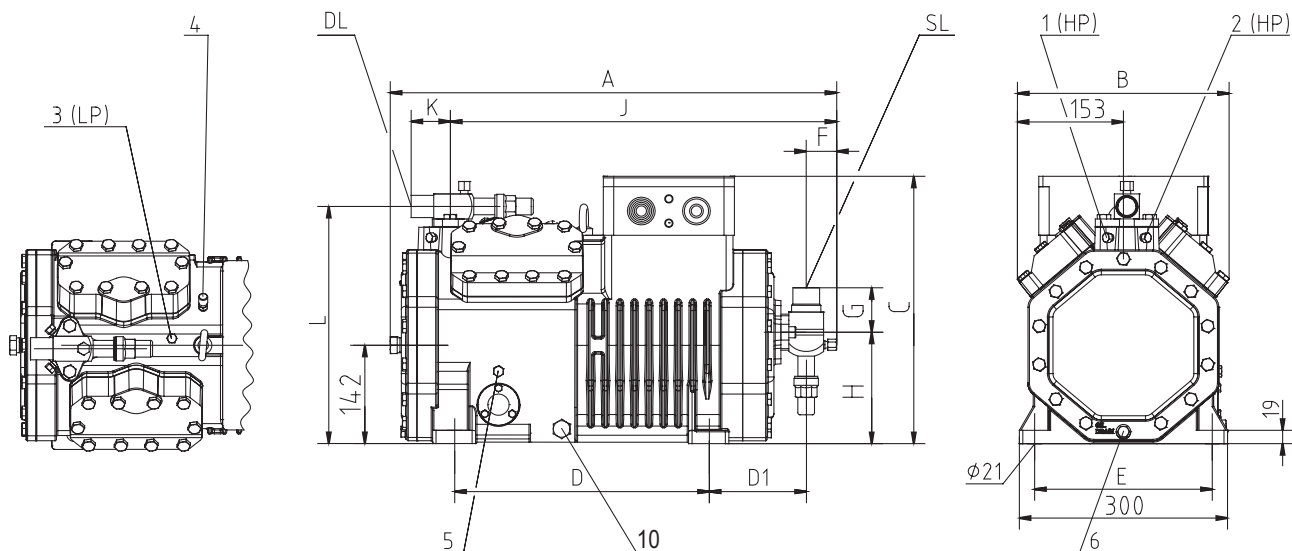
4SILV-030(E) 4SILV-050(E) 4SILV-060I(E)
 4SIHV-050(E) 4SIHV-070(E) 4SIHV-090(E)



1 High pressure protection (HP)	R ₂ 1/8	3 Low pressure protection (LP)	R ₂ 1/8
5 Oil fill plug	R ₂ 1/4	6 Oil drain plug	M10x1.5
10 Crankcase heater	Φ12		

Model	A	B	C	D	D1	E	F	G	H	J	K	L
4SILV-030(E)	432	304	350	293	75	198	221	42	314	361	37	306
4SIHV-050(E)												
4SILV-050(E)	432	304	353	293	75	198	221	57	317	361	42	310
4SIHV-070(E)												
4SILV-060I(E)	458	304	353	293	101	198	247	57	317	387	42	310
4SIHV-090(E)												

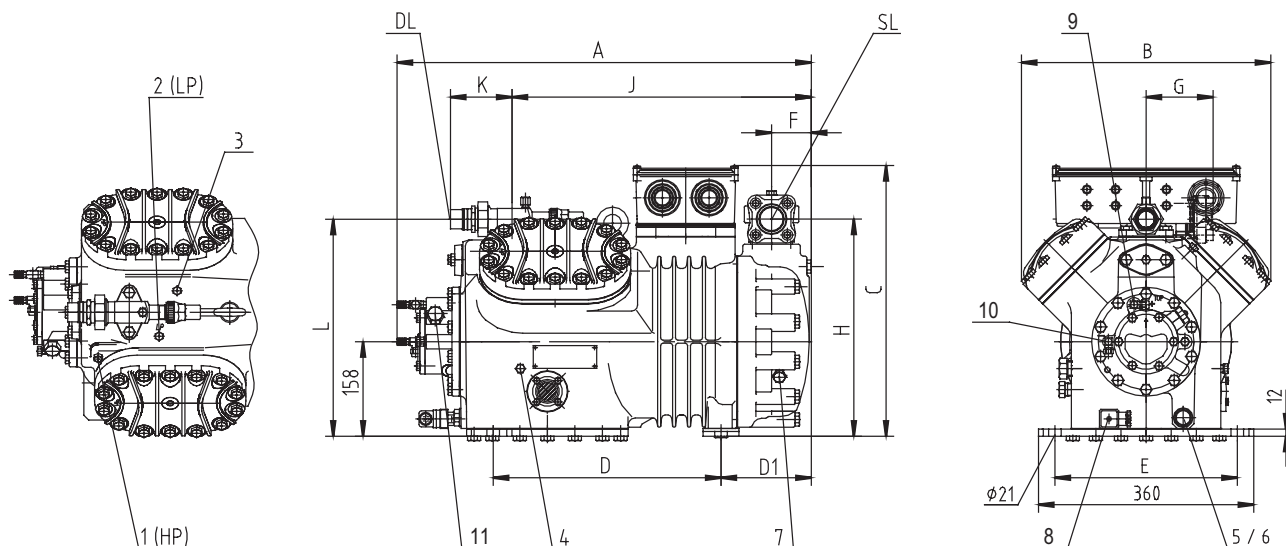
4SILV-060(E) 4SILV-080(E) 4SILV-100(E) 4SILV-120(E)
 4SIHV-100(E) 4SIHV-120(E) 4SIHV-150(E) 4SIHV-200(E)



1	High pressure protection (HP)	R ₂ 1/8	2	Discharge temperature protection or spray sensor	R ₂ 1/8
3	Low pressure protection (LP)	R ₂ 1/8	4	Spray nozzle(LP)	R ₂ 1/8
5	Oil fill plug	R ₂ 1/4	6	Oil drain	M10x1.5
10	Crankcase heater	R ₂ 3/8			

Model	A	B	C	D	D1	E	F	G	H	J	K	L
4SILV-060(E)	634	306	385	367	140	256	44	57	161	558	42	339
4SIHV-100(E)												
4SILV-080(E)	634	306	385	367	140	256	44	63	161	558	57	339
4SIHV-120(E)												
4SILV-100(E)	634	306	385	367	140	256	44	63	161	558	57	340
4SILV-120(E)												
4SIHV-150(E)	657	306	385	367	160	256	44	111	172	581	57	340
4SIHV-200(E)												

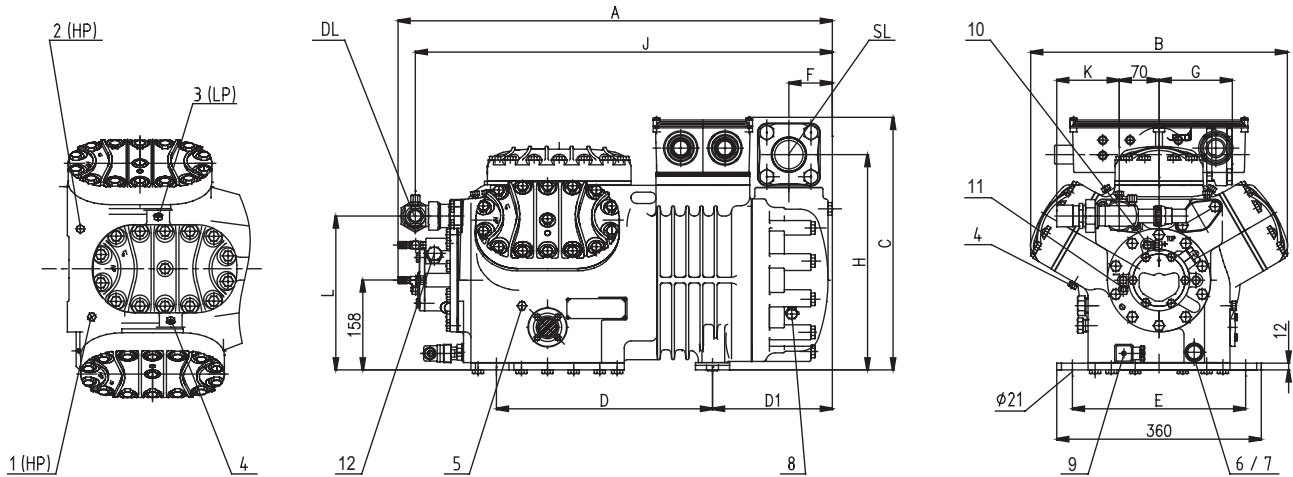
4SILV-150(E) 4SIHV-250(E) 4SILV-200(E) 4SIHV-300(E)



1 High pressure protection (HP), protection of discharge temperature or spray sensor	R ₂ 1/8	2 Low pressure protection (LP)	R ₂ 1/8
3 Spray nozzle(LP)	R ₂ 1/8	4 Oil fill plug	R ₂ 1/4
5 Oil drain plug	M27x2	6 Oil filter (magnetic screw)	M27x2
7 Oil return (oil separator)	R ₂ 1/4	8 Crankcase heater	R ₂ 1/2
9 Oil pressure high pressure	7/16 "-20UNF	10 Oil pressure low pressure	7/16 "-20UNF
11 Electronic oil pressure differential switch connection	M20x1.5		

Model	A	B	C	D	D1	E	F	G	H	J	K	L
4SILV-150(E)	693	417	453	381	151	305	67	112	363	501	103	363
4SIHV-250(E)												
4SIHV-300(E)	741	417	453	381	199	305	87	129	379	549	103	363
4SILV-200(E)	711	417	453	381	169	305	77	129	379	519	103	363

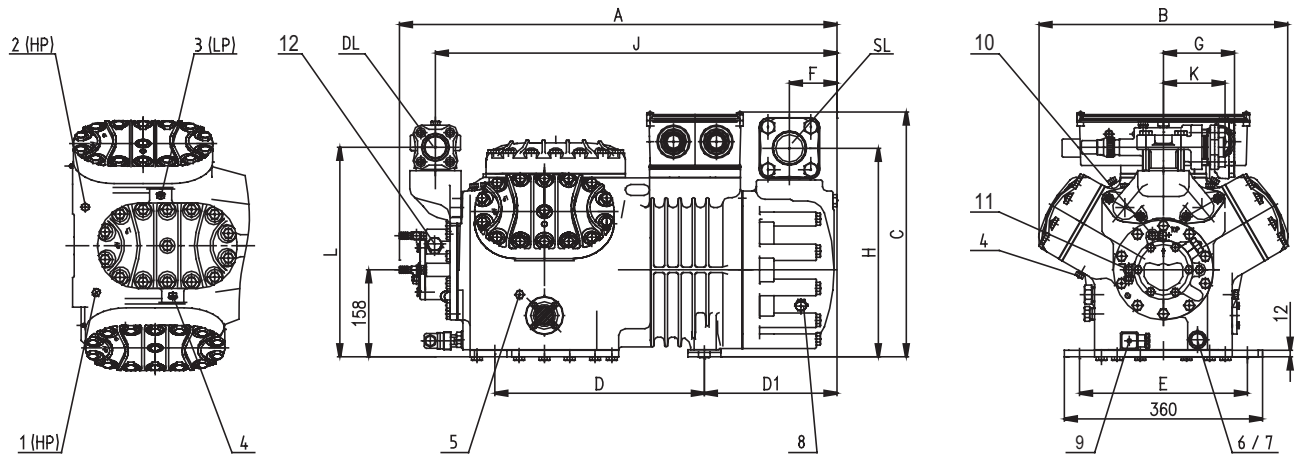
6SILW-250(E) 6SIHW-350(E) 6SILW-300(E) 6SIHW-400(E)



1 High pressure protection (HP)	R ₂ 1/8	2 Discharge temperature protection or spray sensor	R ₂ 1/8
3 Low pressure protection (LP)	R ₂ 1/8	4 Spray nozzle(LP)	R ₂ 1/8
5 Oil fill plug	R ₂ 1/4	6 Oil drain plug	M27x2
7 Oil filter (magnetic screw)	M27x2	8 Oil return (oil separator)	R ₂ 1/4
9 Crankcase heater	R ₂ 1/2	10 Oil pressure high pressure	7/16 "-20UNF
11 Oil pressure low pressure	7/16 "-20UNF	12 Electronic oil pressure differential switch connection	M20x1.5

Model	A	B	C	D	D1	E	F	G	H	J	K	L
6SILW-250(E)	765	452	445	381	211	305	77	129	379	734	110	271
6SILW-300(E)												
6SIHW-350(E)	795	452	445	381	241	305	87	129	379	764	110	271
6SIHW-400(E)												

6SILW-400(E) 6SIHW-500(E)



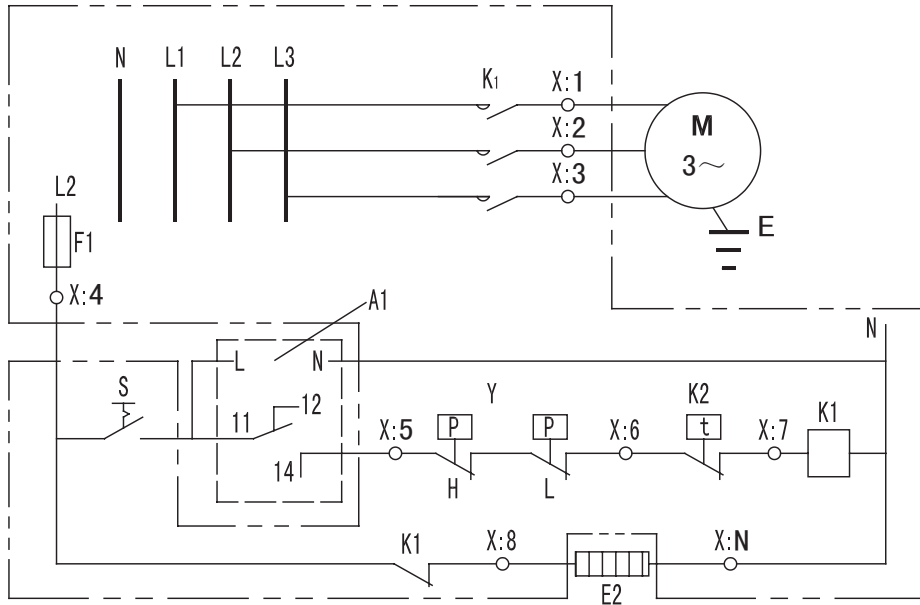
1 High pressure protection (HP)	R ₂ 1/8	2 Discharge temperature protection or spray sensor	R ₂ 1/8
3 Low pressure protection (LP)	R ₂ 1/8	4 System spray nozzle (LP)	R ₂ 1/8
5 Oil fill plug	R ₂ 1/4	6 Oil drain plug	M27x2
7 Oil filter (magnetic screw)	M27x2	8 Oil return (oil separator)	R ₂ 1/4
9 Crankcase heater	R ₂ 1/2	10 Oil pressure high pressure	7/16 "-20UNF
11 Oil pressure low pressure	7/16 "-20UNF	12 Electronic oil pressure differential switch connection	M20x1.5

Model	A	B	C	D	D1	E	F	G	H	J	K	L
6SILW-400(E)	795	452	445	381	241	305	87	129	379	730	112	381
6SIHW-500(E)												

The following diagram is supplied to customers for reference. A switch can be added to the crankcase heater circuit.

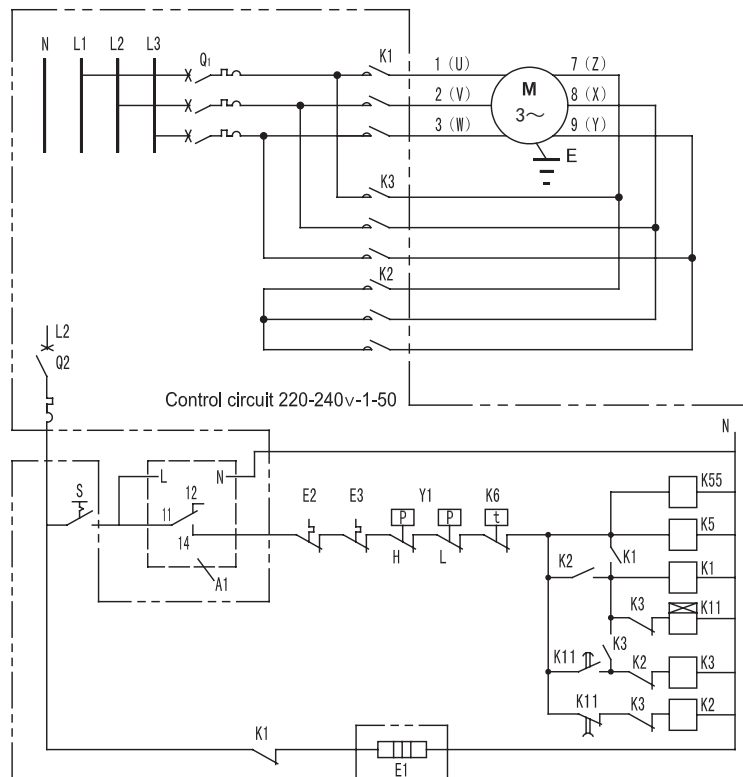
Direct start electrical diagrams [Applicable for 4SILV-030(E), 4SIHV-050(E), 4SILV-050(E), 4SIHV-070(E), 4SILV-060I(E), 4SIHV-090(E), 4SILV-060(E), 4SIHV-100(E), 4SILV-080(E), 4SIHV-120(E), 4SILV-100(E), 4SIHV-150(E), 4SILV-120(E), 4SIHV-200(E)]

Electrical diagram For Direct Start



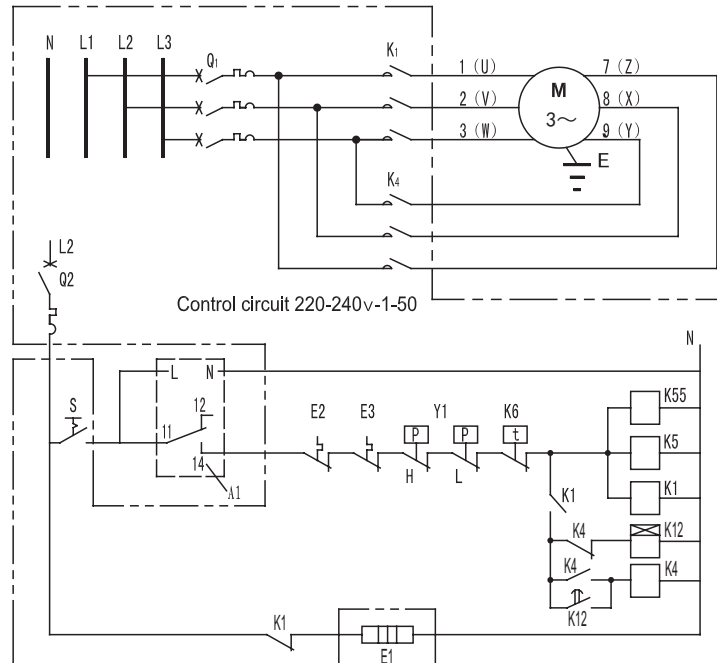
Y-Δ Y-Δ Start electrical diagram [Applicable for 4SILV-030(E), 4SIHV-050(E), 4SILV-050(E), 4SIHV-070(E), 4SILV-060I(E), 4SIHV-090(E)]

Electrical diagram For Y-Δ



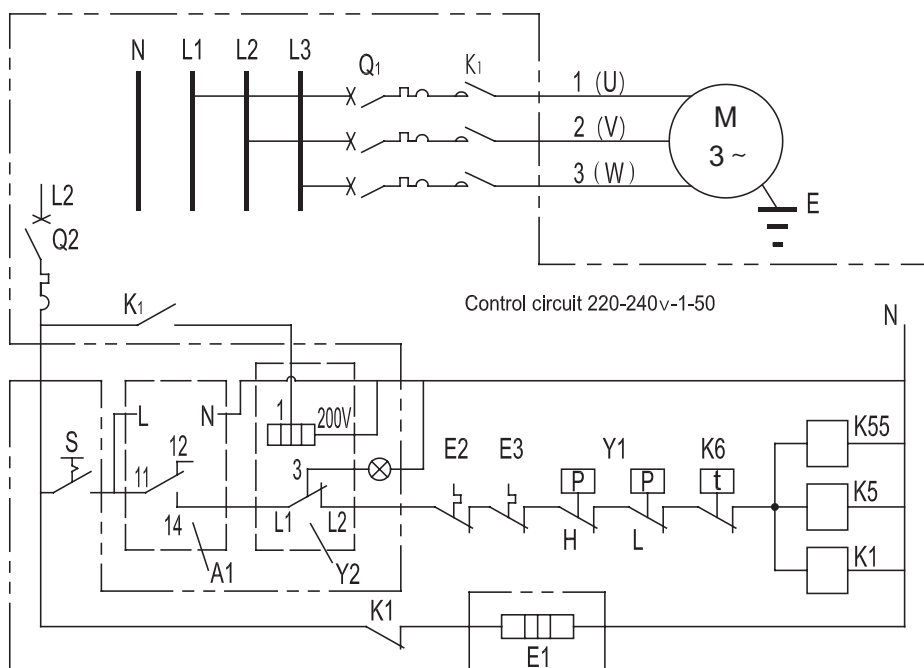
Part winding start electrical diagrams [Applicable for 4SILV-060(E), 4SIHV-100(E), 4SILV-080(E), 4SIHV-120(E), 4SILV-100(E), 4SIHV-150(E), 4SILV-120(E), 4SIHV-200(E)]

Winding start electrical diagrams

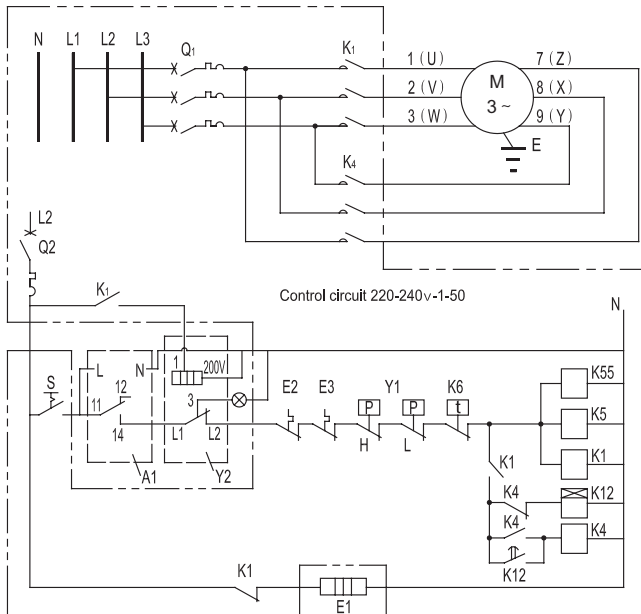


Direct start electrical diagrams [Applicable for 4SILV-150(E), 4SIHV-250(E), 4SILV-200(E), 4SIHV-300(E), 6SILW-250(E), 6SIHW-350(E), 6SILW-300(E), 6SIHW-400(E), 6SILW-400(E), 6SIHW-500(E)]

Direct start electrical diagrams



Part winding start electrical diagrams [Applicable for 4SILV-150(E), 4SIHV-250(E), 4SILV-200(E), 4SIHV-300(E), 6SILW-250(E), 6SIHW-350(E), 6SILW-300(E), 6SIHW-400(E), 6SILW-400(E), 6SIHW-500(E)]
 Winding start electrical diagrams



Electrical Code Description:

- M: Compressor motor
- Q1: Mini breaker
- Q2: Mini breaker
- S: Manual switch
- K1-K4: Contactor M1
- K5, K55: Fan contactor
- K6: Temperature controller
- K11: Time relay
- K12: Time relay (0.5s-0.7s for winding start)
- E1: Crankspace heater
- E2-E3: Fan heat protection switch
- Y1: Pressure controller
- Y2: Oil differential pressure switch
- A1: Motor protection block
- A5: Compressor terminal box

The compressor motor connecting instruction is inside the terminal box of the compressor.

	Direct start Δ 220-240V 3Ph	Y-Δ Start 220-240V 3Ph
Y-Δ Motor Code E		
Part winding motor (Y-Y) Code A		

Capacity(Watts)

50Hz

Model	Condensing Temperature	Evaporating Temperature							
		-50	-45	-40	-35	-30	-25	-20	
6TIUW-200	30	Q	9180	12400	15960	19970	24500	29700	35500
		P	7910	9150	10410	11680	12950	14210	15460
	40	Q	8590	11940	15560	19560	24050	29100	34750
		P	8710	10190	11670	13150	14640	16120	17610
	50	Q			15220	19210	23600	28500	34050
		P			12800	14560	16290	18000	19740
6TIUW-250	30	Q	10540	14230	18320	22900	28150	34050	40800
		P	9080	10510	11950	13410	14860	16310	17750
	40	Q	9860	13700	17860	22450	27600	33400	39900
		P	10000	11700	13400	15100	16810	18510	20210
	50	Q			17470	22050	27100	32750	39100
		P			14700	16720	18700	20670	22660
6TIUW-300	30	Q	12610	17030	21900	27400	33700	40750	48800
		P	10860	12570	14300	16040	17780	19520	21230
	40	Q	11790	16390	21350	26850	33000	39950	47750
		P	11960	13990	16030	18070	20110	22150	24180
	50	Q			20900	26400	32450	39200	46750
		P			17590	20010	22370	24730	27120

Capacity(Watts)

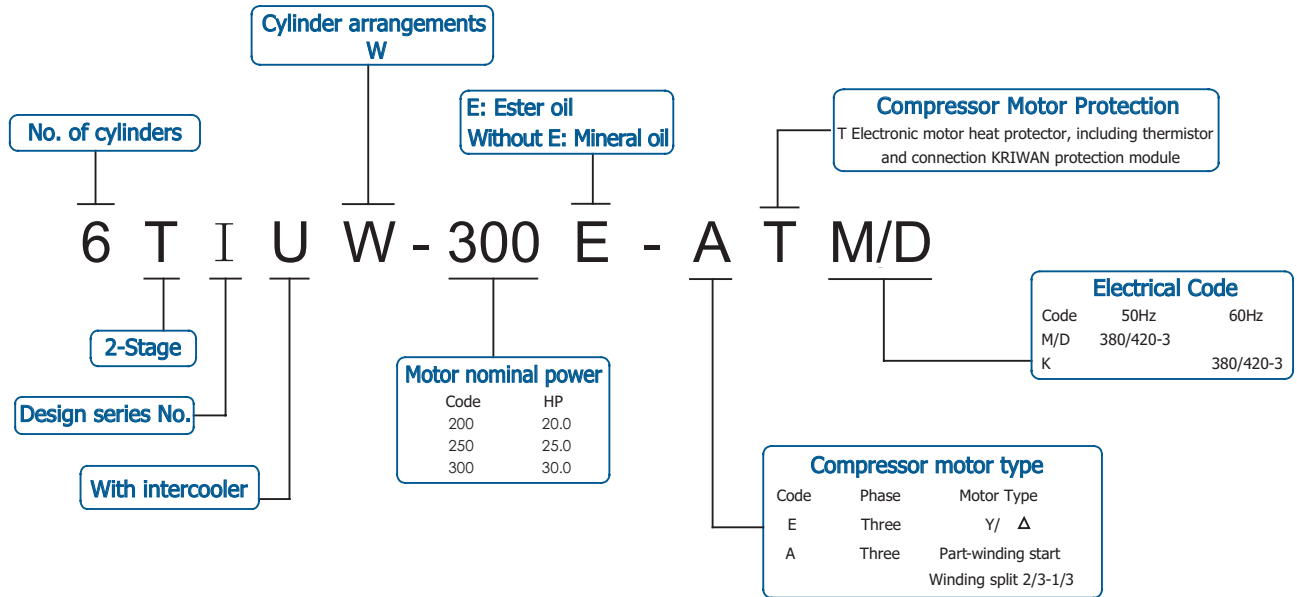
50Hz

Model	Condensing Temperature	Evaporating Temperature										
		-70	-65	-60	-55	-50	-45	-40	-35	-30	-25	
6TIUW-200E	30	Q	4230	5770	7690	10020	12760	15910	19440	23300	27450	31900
		P	5400	6400	7440	8570	9760	11000	12300	13640	15020	16430
	40	Q		5540	7420	9640	12240	15230	18610	22350	26350	30600
		P		7070	8290	9570	10920	12330	13790	15320	16900	18530
	50	Q				9280	11800	14630	17810	21350	25200	29350
		P				10550	12070	13650	15300	17010	18790	20630
6TIUW-250E	30	Q	4870	6630	8830	11480	14620	18220	22250	26600	31300	36200
		P	6200	7290	8490	9800	11190	12650	14160	15710	17270	18840
	40	Q		6350	8500	11040	14000	17420	21300	25500	30100	34900
		P		8130	9520	11000	12550	14160	15850	17600	19400	21270
	50	Q				10620	13490	16720	20350	24350	28750	33450
		P				12100	13850	15670	17560	19350	21580	23710
6TIUW-300E	30	Q	5800	7920	10540	13690	17420	21700	26500	31750	37400	43400
		P	7400	8740	10200	11770	13420	15150	16940	18780	20650	22530
	40	Q		7590	10150	13170	16680	20700	25300	30300	35700	41500
		P		9720	11370	13140	15000	16950	18960	21010	23100	25200
	50	Q				12650	16060	19870	24100	28850	34000	39500
		P				14490	16570	18750	21010	23330	25690	28070

* Relating to 20°C suction temperature, with intercooler.

2-Stage 6TI Series

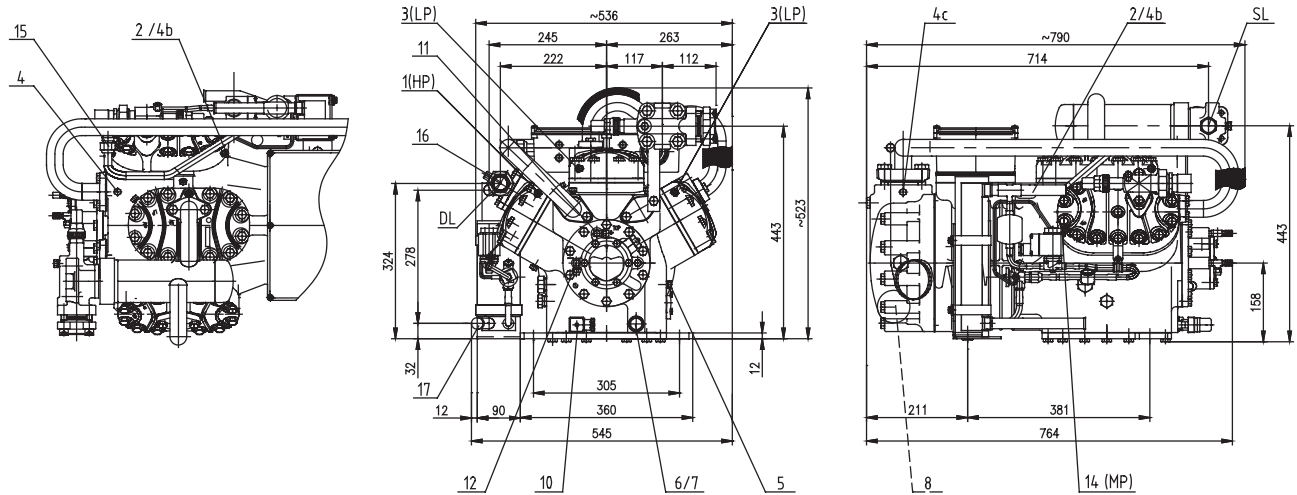
Compressor Model Description



2-Stage 6TI Series

Dimensions

6TIUW-200(E) 6TIUW-250(E) 6TIUW-300(E)



1 High pressure protection (HP)	R ₂ 1/8	2 Discharge temperature protection or or spray sensor	R ₂ 1/8
3 Low pressure protection (LP)	R ₂ 1/8	4 Spray system nozzle (without liquid subcooling)	R ₂ 1/8
4b Spray temperature sensor (HP)	R ₂ 1/8	4c Spray temperature sensor (MP/with liquid subcooling)	R ₂ 1/8
5 Oil fill plug	R ₂ 1/4	6 Oil drain plug	M27x2
7 Oil filter (magnetic screw)	M27x2	8 Oil return (oil separator)	R ₂ 1/4
10 Crankcase heater	R ₂ 1/2	11 Oil pressure high pressure	7/16 "-20UNF
12 Oil pressure low pressure	7/16 "-20UNF	14 Medium pressure (MP)	
15 Spray (with thermal expansion valve, without liquid supercooling)		16 Refrigerant import of liquid subcooler	
17 Refrigerant outlet of liquid subcooler			

2-Stage 6TI Series

Technical Data

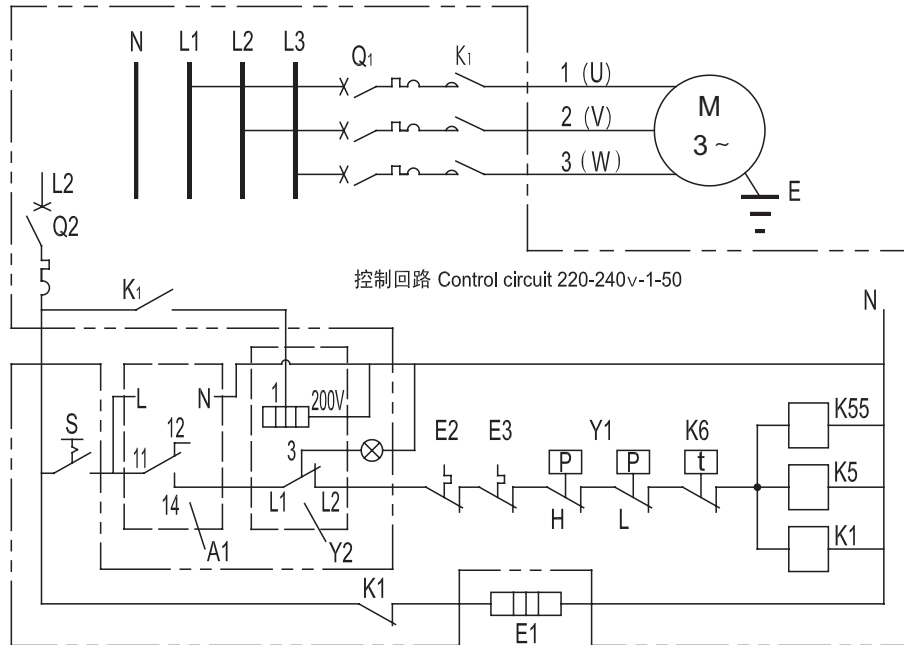
Model	6TIUW-200 6TIUW-200E	6TIUW-250 6TIUW-250E	6TIUW-300 6TIUW-300E
Nominal Power	20	25	30
Number of Cylinders	6	6	6
Displacement Capacity (m ³ /h)	73.6/88.8	84.5/101.4	101.1/121.3
Starting Current (LRA) (A)			
ATM/D 380-420V 3PH 50 Hz	97	116	135
Max. Working Current (MCC) (A)			
ATM/D 380-420V 3PH 50 Hz	37	45	53
Pipe Connection (In)			
Discharge Line (DL)	1 3/8"	1 3/8"	1 3/8"
Suction Line (SL)	1 5/8"	1 5/8"	1 5/8"
Crankcase Heater Power (W)	160	160	160
Dimensions			
Length	790	790	790
Width	536	536	536
Height (without fan)	523	523	523
Installation Size of Footing	381 × 305	381 × 305	381 × 305
Oil Filling Volume (L)	4.75	4.75	4.75
Weight (kg)	220	233	234

2-Stage 6TI Series

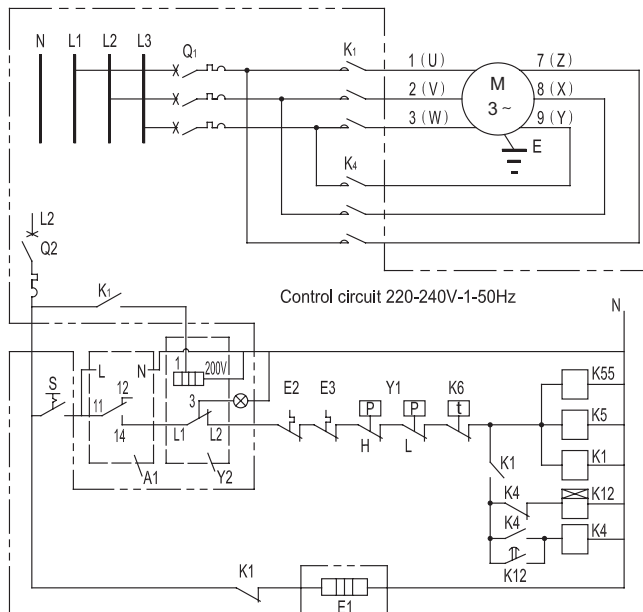
Electrical Diagrams

The following diagrams are provided as reference for clients to design their own electric control system, a manual switch can be set in the circuit of the crankcase heater.

Direct Start Electrical Diagram



Part Winding Start Electrical Diagram



Electrical Code Note:

- M: Compressor motor
- Q1: Mini breaker
- Q2: Mini breaker
- S: Manual switch
- K1-K4: Contactor M1
- K5, K55: Fan contactor
- K6: Temperature controller
- K11: Time relay
- K12: Time relay (0.5s-0.7s for winding start)
- E1: Crankcase heater
- E2-E3: Fan heat protection switch
- Y1: Pressure controller
- Y2: Oil differential pressure switch
- A1: Motor protection block
- A5: Compressor terminal box

The compressor motor connecting instruction is inside the terminal box of the compressor.

Y-Δ Motor Code E	<p>Direct start Δ 220-240V 3Ph</p>	<p>Y-Δ Start 220-240V 3Ph</p>
	<p>Direct start Y-Y 380-420V 3Ph/440-480V 3Ph</p>	<p>Part winding start Y-Y, first start 1-2-3 380-420V 3Ph/440-480V 3Ph</p>
Part winding motor (Y-Y) Code A	<p>Direct start Y-Y 380-420V 3Ph/440-480V 3Ph</p>	<p>Part winding start Y-Y, first start 1-2-3 380-420V 3Ph/440-480V 3Ph</p>